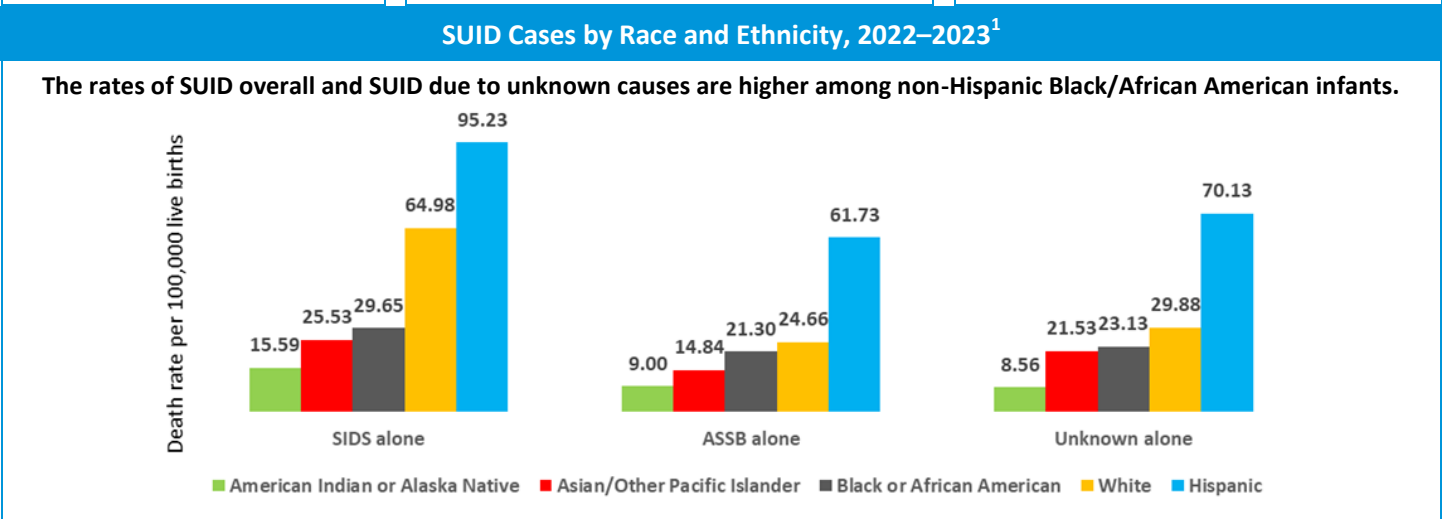
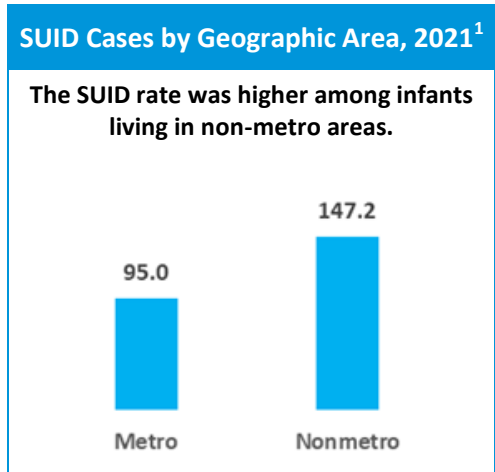
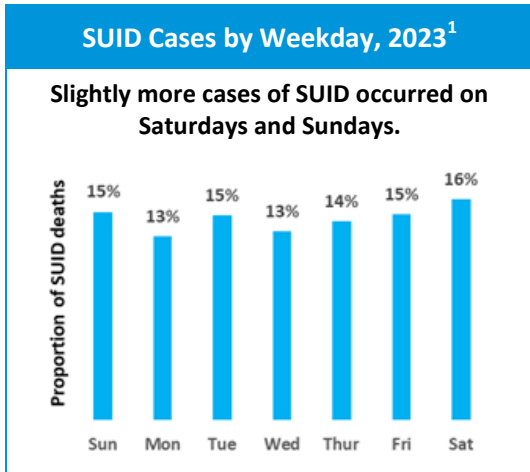
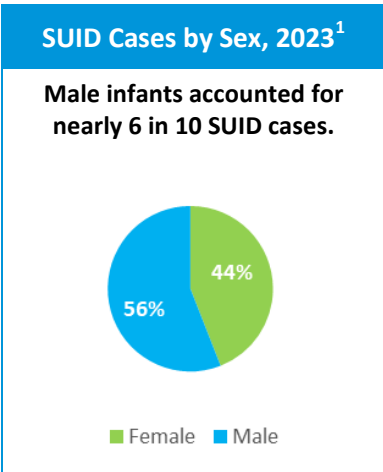
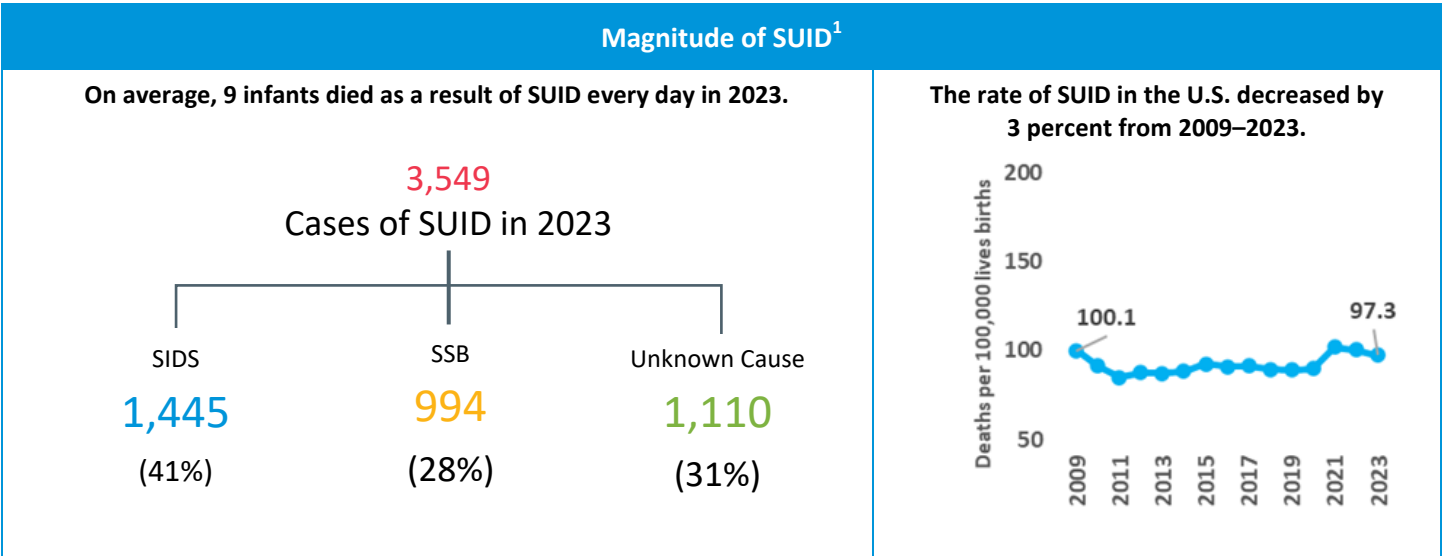


# FAST FACTS

## Sudden Unexpected Infant Death (SUID) in 2023

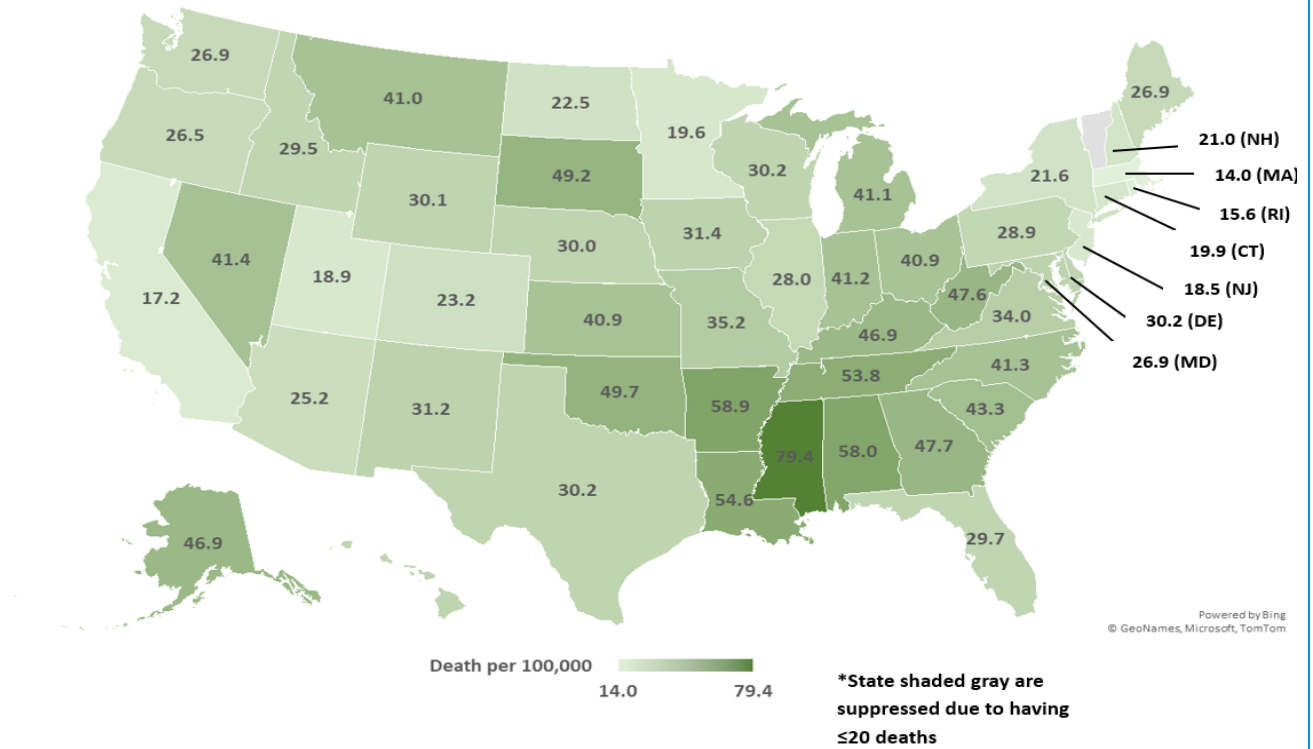


This Fast Facts focuses on cases of SUID in the U.S. in 2023. SUID is a term for the sudden and unexpected death of an infant (<1 year of age) in which the cause was not obvious before investigation. The three types of SUID covered in this Fast Facts are sudden infant death syndrome (SIDS), suffocation and strangulation in bed (SSB), and other deaths from unknown causes (unknown cause).



## SUID Rates by State, 2019–2023<sup>1</sup>

SUID rates are highest in Mississippi, Alabama, and Arkansas.



### Notes and References

<sup>1</sup>Data on SUID were retrieved from the CDC Wide-ranging ONline Data for Epidemiologic Research (CDC WONDER) Underlying Cause of Death, 1999–2020 database. ICD-10 codes used for data retrieval were SSB (E913.0; W75), SIDS (798.0; R95), and unknown cause, (799.9; R99). The SUID rate was retrieved by combining SSB, SIDS and unknown cause deaths. Date accessed: April 15, 2022. Accessed from: <https://wonder.cdc.gov/ucd-icd10.html>

Last updated August 2025.

**SAFE**  
**KIDS**  
WORLDWIDE.