

Data Summary: Rail-Related Injuries for the Greater Sacramento Area

This data summary details rail-related injuries occurring between 2011 and 2020 in the Greater Sacramento area consisting of Sacramento, Yuba, Placer, Yolo, Nevada, and Sutter counties. The full profile, including data figures and county-level incident maps, can be found at <https://tinyurl.com/SKWSacramentoRailProfile>.

Overview

- 195 rail-related injuries occurred in the Greater Sacramento area between 2011 and 2020, for an average of 20 injuries per year. There were more than twice as many injuries in 2020 compared to 2011 (28 and 12).
- Sacramento County had the most injuries (59%), followed by Yuba (14%), Placer (13%), Yolo (11%), Nevada (2%), and Sutter (1%).
- Children ages 0 to 19 years accounted for 8% of injuries.
- Most injuries (90%) involved trains or other on-track equipment while 10% did not involve on-track equipment.
- The majority of injuries were due to trespassing¹ incidents (74%) and 26% were due to railroad crossing² incidents. However, trespassing injuries were less often fatal (42%) compared to railroad crossing injuries (55%).
- Railroad crossing and trespassing injuries were most frequent between 12:00 PM and 5:59 PM.

Railroad Crossing Circumstances¹

- Those injured in railroad crossing incidents were most often motor vehicle occupants (50%) and pedestrians (30%).
- Going through or around the gates was the reported activity most often associated with injury at railroad crossings among highway users (48%).
- Most (96%) railroad crossing injuries occurred when the weather was clear.
- 44% of railroad crossing injuries occurred during dark or low-light hours. Of those, 41% occurred at crossings that were not illuminated by streetlights or special lights.

Trespassing Circumstances²

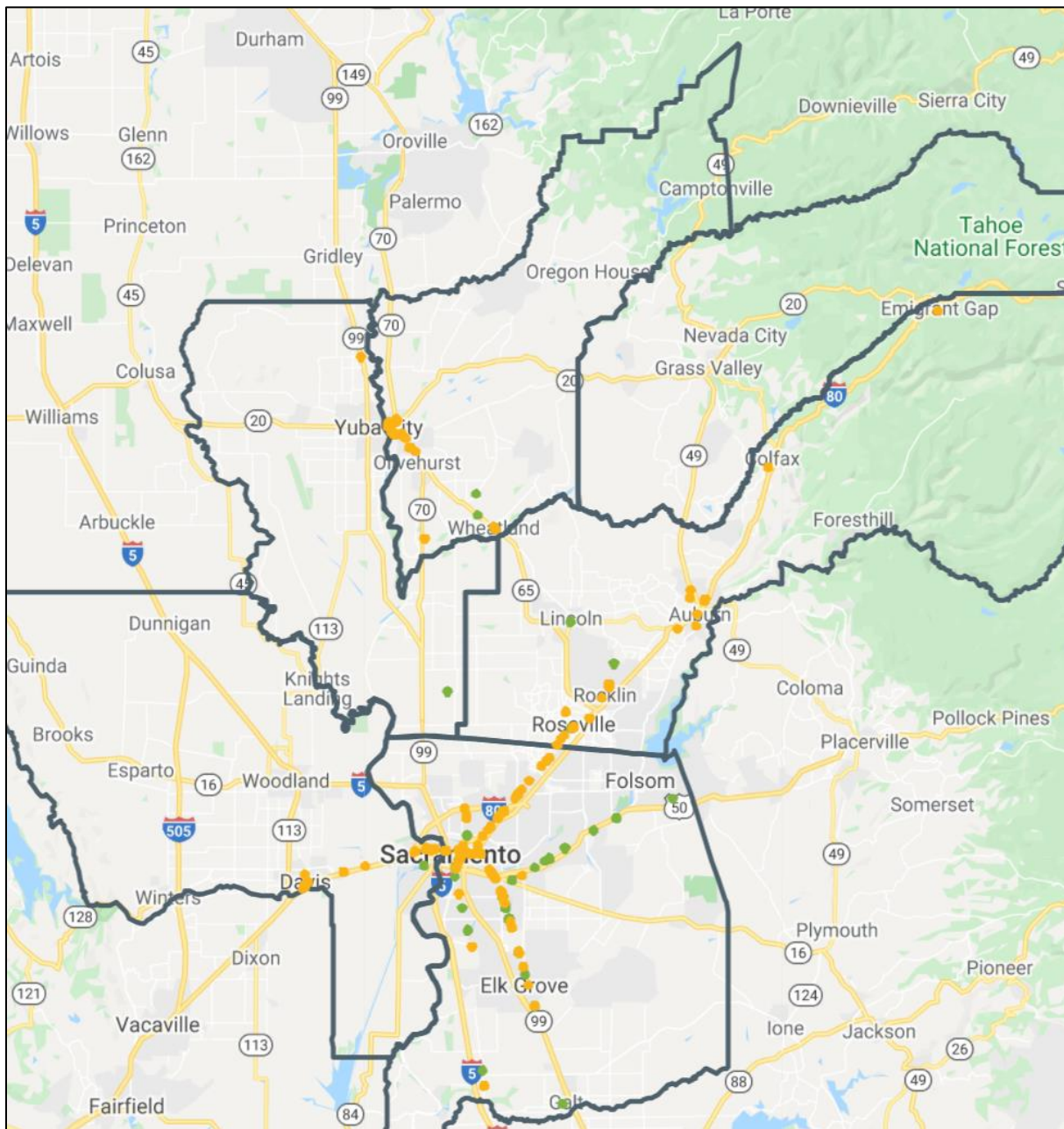
- 79% of trespassers who were injured were struck by on-track equipment. Of those, 59% were reported as on the tracks at the time of impact, 23% were beside the tracks, and 5% were between the tracks. Of those struck on, beside, or between the tracks, 68% were walking, 25% were lying down, 15% were standing, and 9% were sitting at the time of impact.

¹ Trespassing injuries occur when a person is injured while on private railroad property without permission. They are most often pedestrians taking a shortcut across or along tracks, but also include loiterers and those engaging in recreational activities such as hunting or jogging.

² Railroad crossing injuries are when a person or highway user is struck by a train while attempting to cross at a designated crossing where tracks intersect a roadway or walkway at the same level.



Rail-Related Injuries by Incident Type; Yuba, Placer, Yolo, Nevada, and Sutter Counties, CA



● Railroad crossing injury ● Trespassing injury

The full report and other rail safety resources for families, educators and community partners can be downloaded from the Safe Kids Rail Safety Station online hub at safekids.org/RailSafetyStation.

