

Data Summary: Rail-Related Injuries for the San Joaquin Area

This data summary details rail-related injuries occurring between 2011 and 2020 in San Joaquin County, California. The full profile, including data figures and county-level incident maps, can be found at <https://tinyurl.com/SKWSanJoaquinCoRailProfile>.

Overview

- 124 rail-related injuries occurred in the San Joaquin County between 2011 and 2020, for an average of 12 injuries per year. The number of injuries in 2020 was 41% higher than in 2011 (17 and 12).
- Nearly half of the rail-related injuries in the county were fatal (54%).
- Children ages 0 to 19 years accounted for 12% of injuries.
- Most injuries (90%) involved trains or other on-track equipment while 10% did not involve on-track equipment.
- Injuries were more often the result of trespassing¹ incidents than railroad crossing² incidents (65% and 35%). Moreover, half of trespassing incidents were fatal compared to 39% of railroad crossing incidents.
- Railroad crossing injuries were most frequent between 6:00 AM and 11:59 AM, while trespassing injuries were most frequent between 6:00 AM and 11:59 AM and between 6:00 PM and 11:59 PM.

Railroad Crossing Circumstances¹

- Those injured in railroad crossing incidents were most often pedestrians (63%) and motor vehicle occupants (33%).
- Going through or around the gates was the reported activity most often associated with injury at railroad crossings among highway users (60%).
- Most (84%) railroad crossing injuries occurred when the weather was clear and 16% occurred during cloudy or rainy weather.
- 40% of railroad crossing injuries occurred during dark or low-light hours. Of those, 18% occurred at crossings that were not illuminated by streetlights or special lights.

Trespassing Circumstances²

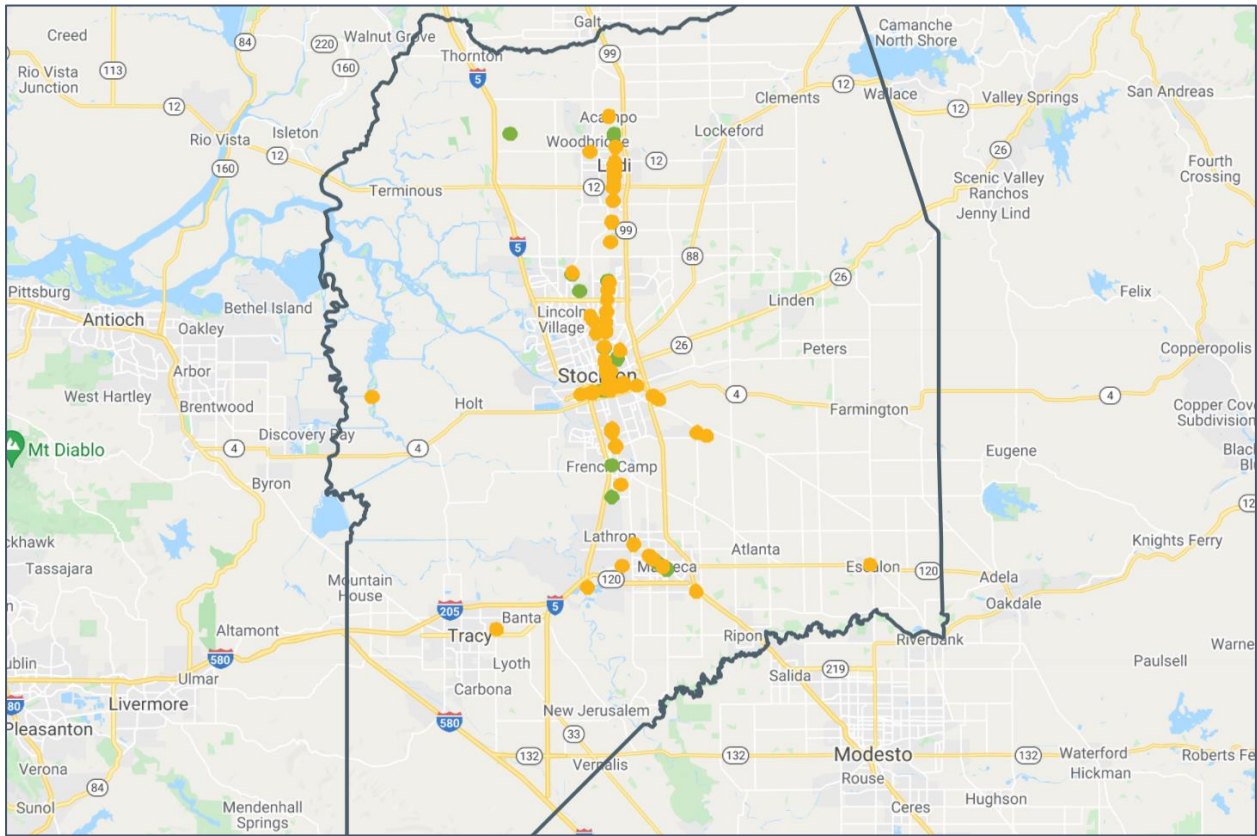
- 75% of trespassers who were injured were struck by on-track equipment. Of those, 55% were reported as on the tracks at the time of impact, 30% were beside the tracks, and 12% were between the tracks. Of those struck on, beside, or between the tracks, 50% were walking, 19% were standing, 4% were sitting, and 9% were lying down at the time of impact.

¹ Trespassing injuries occur when a person is injured while on private railroad property without permission. They are most often pedestrians taking a shortcut across or along tracks, but also include loiterers and those engaging in recreational activities such as hunting or jogging.

² Railroad crossing injuries are when a person or highway user is struck by a train while attempting to cross at a designated crossing where tracks intersect a roadway or walkway at the same level.



Rail-Related Injuries by Incident Type; San Joaquin County, CA



● Railroad crossing injury ● Trespassing injury

The full report and other rail safety resources for families, educators and community partners can be downloaded from the Safe Kids Rail Safety Station online hub at safekids.org/RailSafetyStation.

